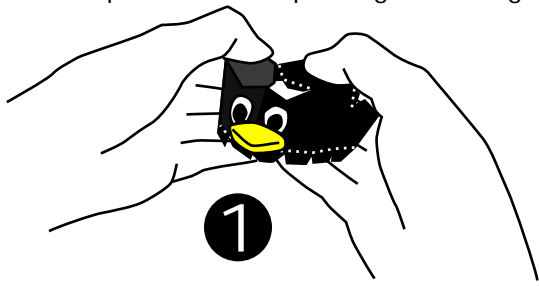
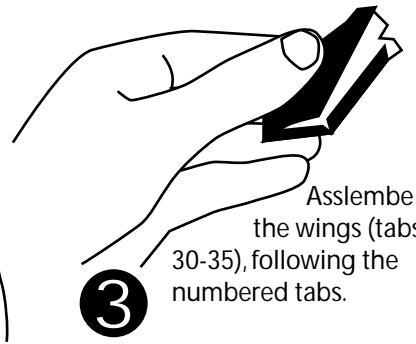
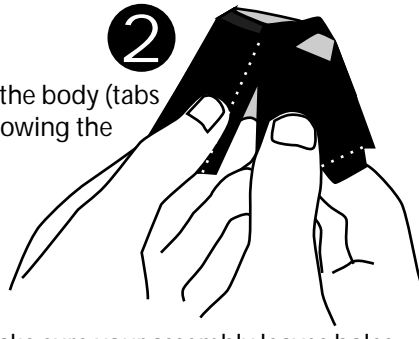




Assemble the head (tabs 1-13), bending the paper so the tabs line up with the corresponding tab-less region.



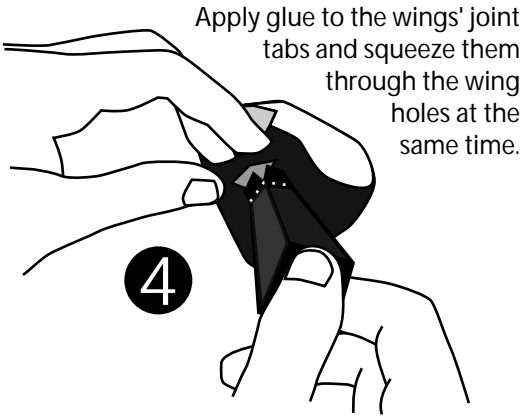
Assemble the body (tabs 15-29), following the numbers.



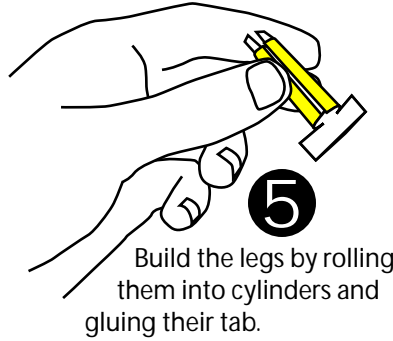
Assemble the wings (tabs 30-35), following the numbered tabs.

Glue all tabs in the number they are ordered. Some tabs may be glued at the same time.

Make sure your assembly leaves holes for the wings.

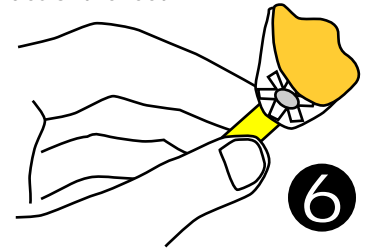


Apply glue to the wings' joint tabs and squeeze them through the wing holes at the same time.



Build the legs by rolling them into cylinders and gluing their tab.

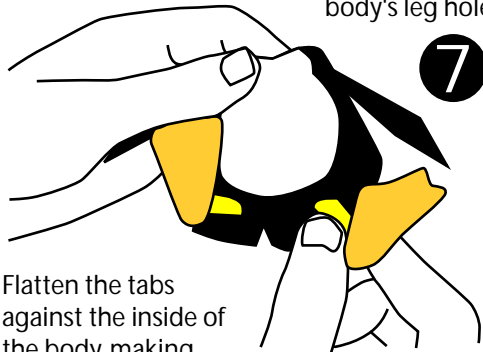
Insert the leg tabs (46-55) through the foot holes. Fold the tabs flat against the undersides of the feet.



Apply glue to the undersides of the feet and attach the foot bottoms.

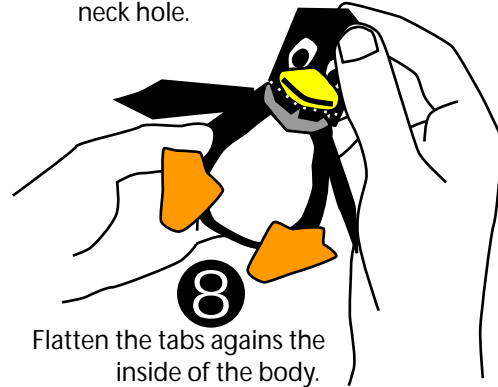
Flatten the joint tabs against the inside of the body to secure the wings.

Apply glue to the leg joint tabs (56 & 57) and insert them into the body's leg holes.



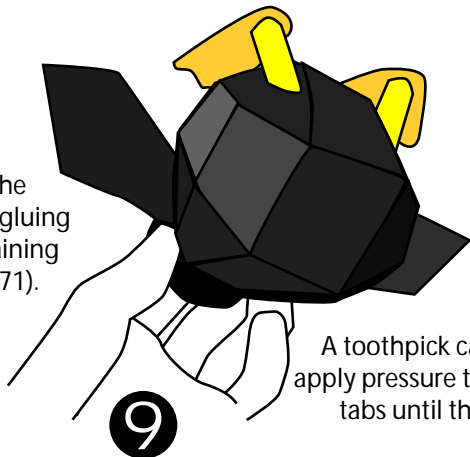
Flatten the tabs against the inside of the body, making sure the feet will point in a nice direction.

Apply glue to the head joint tabs (58-64) and insert them into the neck hole.



Flatten the tabs against the inside of the body.

Seal up the body by gluing the remaining tabs (65-71).



A toothpick can be used to apply pressure to the last few tabs until the glue holds.



Keep your penguin out of direct sunlight as they're used to the cold Antarctic days.